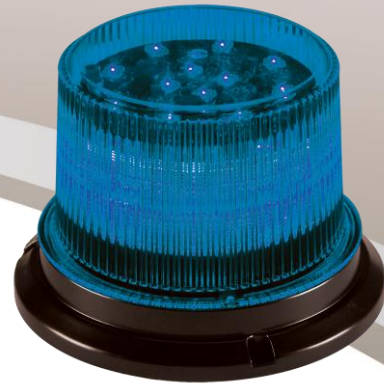




CL199 Series LED Beacon

C3-CL199B



Bright LEDs for both sides and top lighting
R65 Class 1 & 2 Beacon Light

Key benefits

- > Transparent lens in Polycarbonate
- > Safe and permanent installation
- > Water and shock resistant
- > Dimmable
- > 5 year warranty on LEDs

Characterize

- > Black powder coating on base base (PVC)
- > Fixed Mounting using 3 bolts
DIN4148 Type B1
- > Colored LEDs
- > Simulation up to 8 connected Beacons
- > Compliant: ECE R10 Class 1 ECE R65 Class 1 / Class 2

Specifications

- > Operation Voltage: 12VDC / 24VDC (1.2A)
- > 60 LED lamps
- > Height: 114,3mm
- > Base diameter: 165,1mm
Diameter top: 122mm
- > 24 Horizontal High Intensity LED Lamps
- > 12 Horizontal Wide Angle LEDlamps
- > 14 Vertical directional LEDs
- > 30 flash patterns
(Single/double/Quad/Rotation)