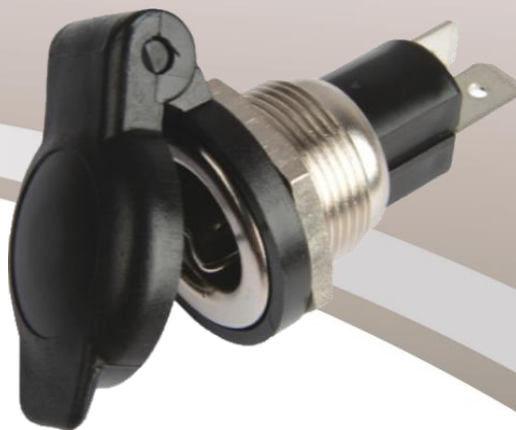




Socket 12VDC with shielding hood

18412



Socket DIN / ISO 4165

Installation

Key benefits

- > Flat plug-in socket
- > Aluminium housing
- > Black coloured

characterize

- > Black coloured
- > 2 connections available
- > Grounding clamp provided
- > Compliance: DIN / ISO 4165
- > SVHC not present

Specifications

- > Voltage +6VDC to +24VDC
- > Current: up to 16A
- > Outer diameter: 18.5mm
- > Inner diameter: 12mm
- > Connector diameter: 6.3mm